

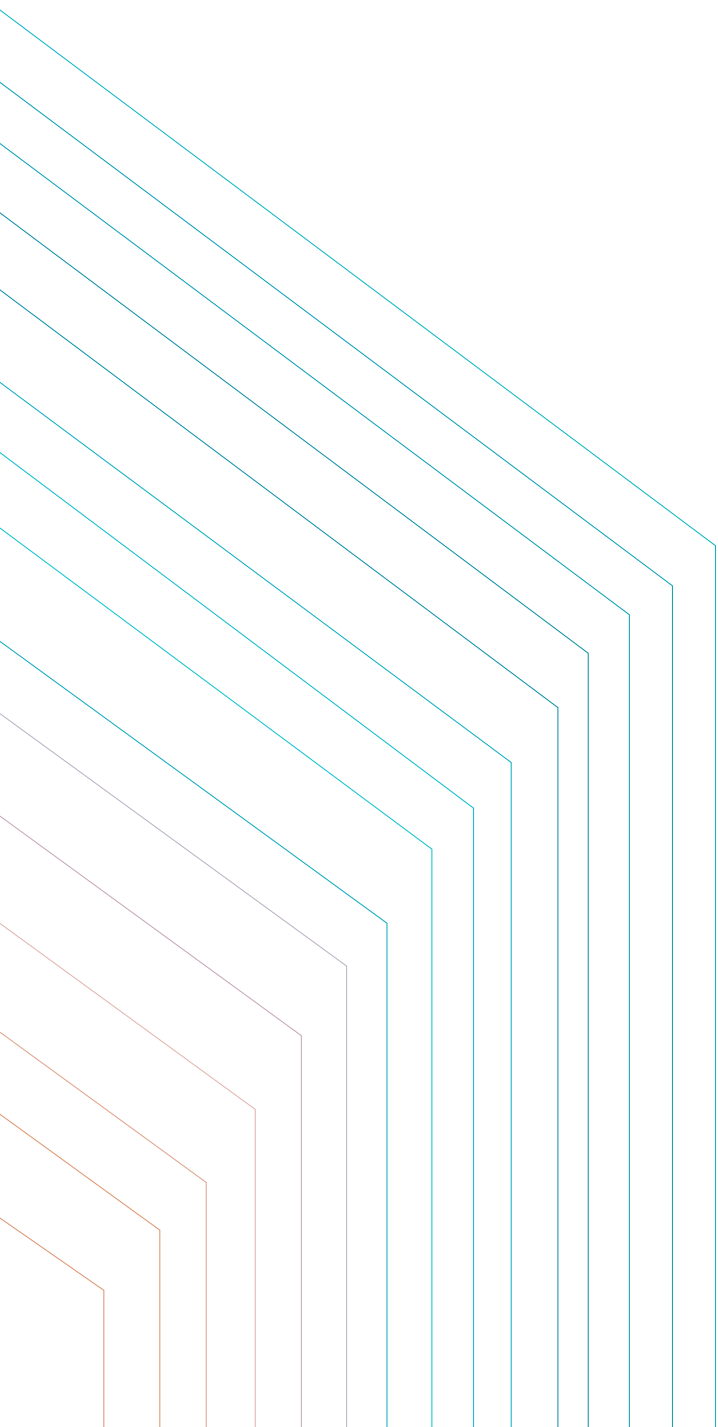
DISTRICT 5

# THE PLATEAU

APARTMENTS | DUPLEXES | LOFTS

0 BUILDINGS

TAKING LIVING SPACES  
TO ELEVATED HEIGHTS





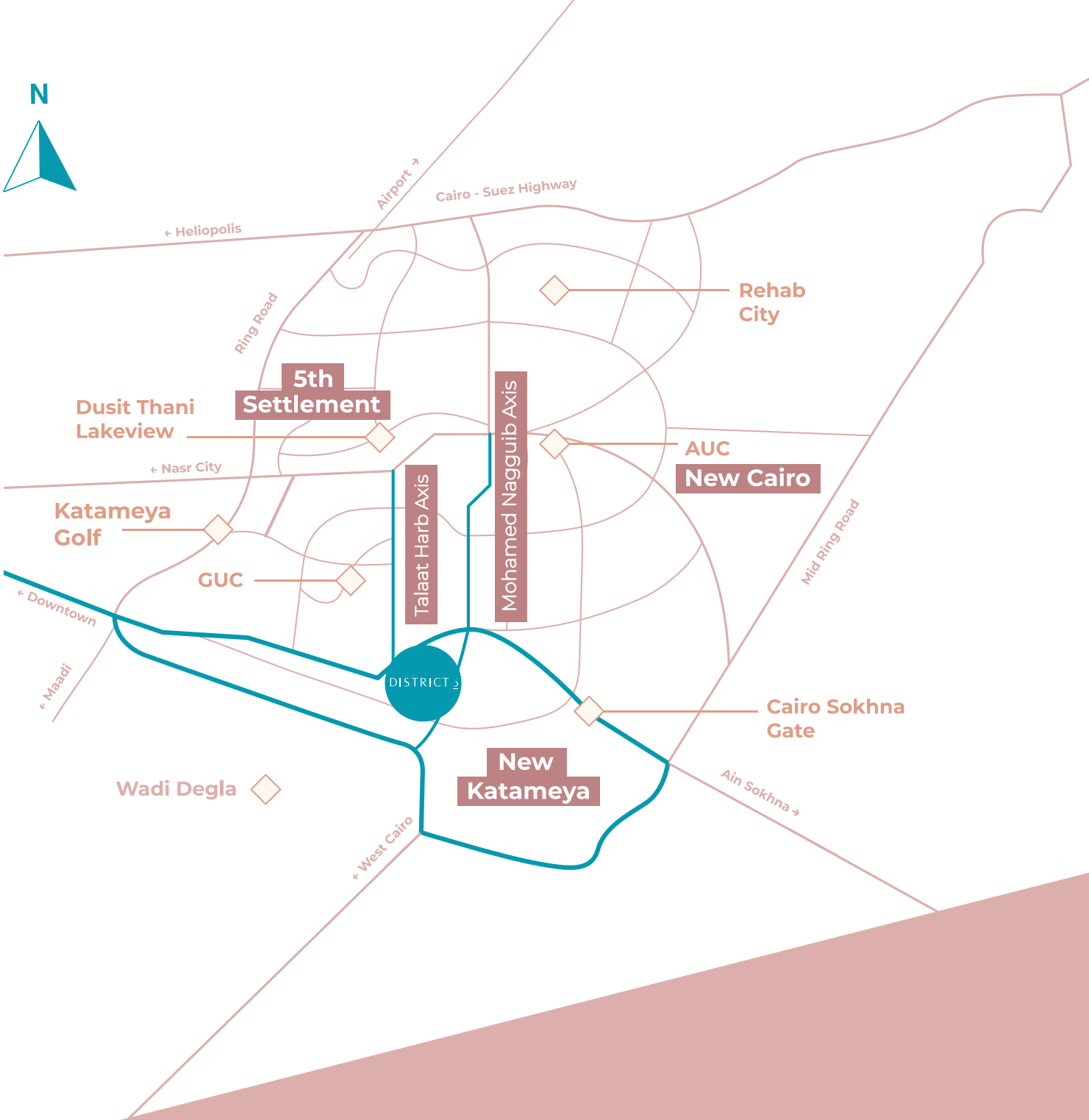
# WELCOME TO DISTRICT 5

District 5 is the result of MARAKEZ's firm belief that high-quality living is attainable and that you can find the lifestyle you wish to experience in your own homes. At District 5, you'll find everything from offices, sports, shopping, entertainment and more. We have built a suburban residential community with the qualities and convenience of urban living.

## STRATEGICALLY SITUATED

Connectivity has become an essential factor for our ability to get the most out of every single day. Through the construction of two major bridges crossing over Ain Sokhna Highway, MARAKEZ seamlessly connects District 5 to New Cairo and its surrounding neighborhoods granting easy access to and from the project.





Road 90	7 min
AUC	8 min
Maadi	13 min
Airport	19 min
Heliopolis	30 min
Sokhna	45 min
West Cairo	50 min

# THE PLATEAU





## **TAKING LIVING SPACES TO ELEVATED HEIGHTS**

Choose to reside at the most elevated neighborhood in all of District 5; The Plateau. Designed to offer endless views of beautiful lush greenery that are bound to take your breath away from the highest vantage point on District 5.

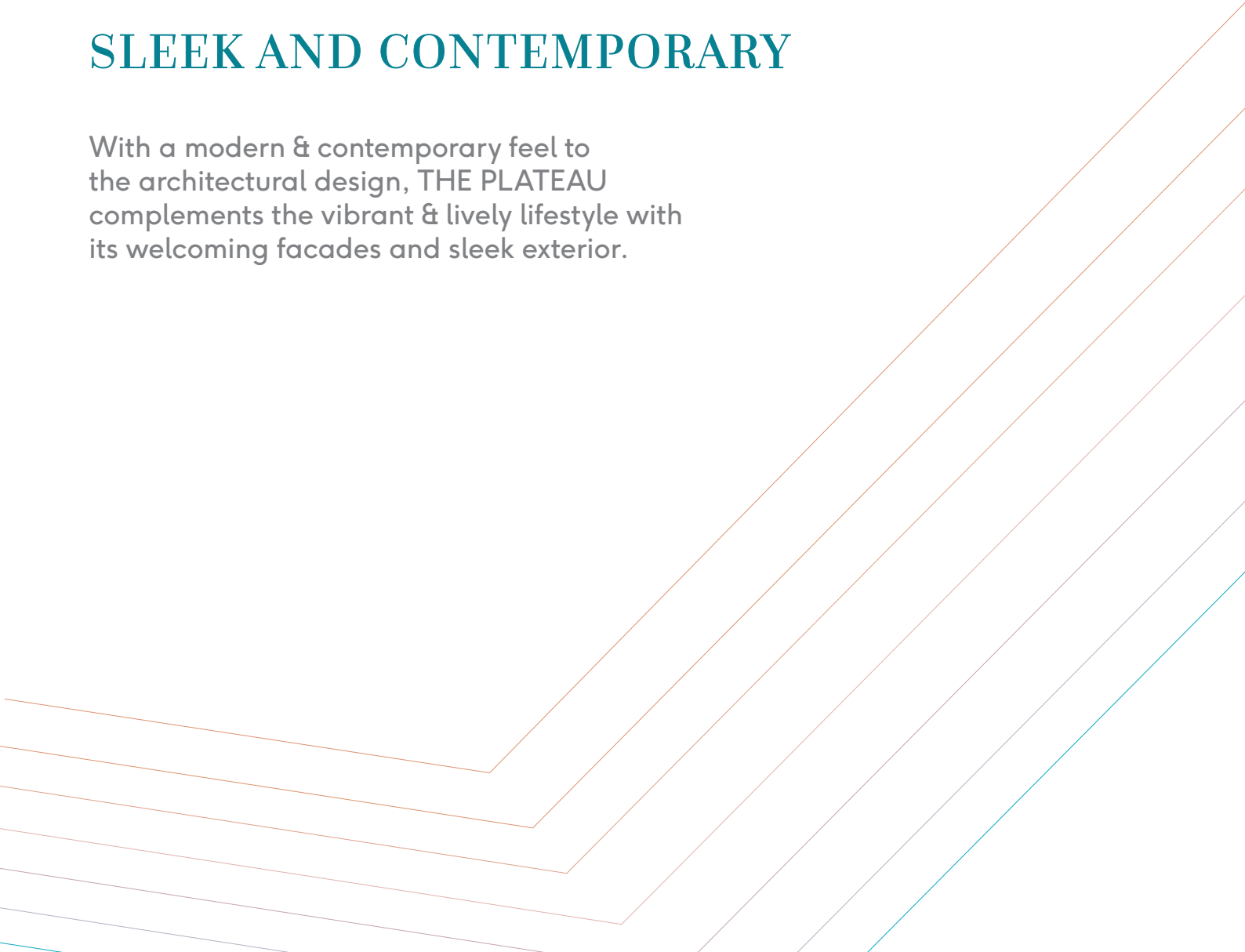






## SLEEK AND CONTEMPORARY

With a modern & contemporary feel to the architectural design, THE PLATEAU complements the vibrant & lively lifestyle with its welcoming facades and sleek exterior.





## LUSH GREENERY

Surrounded by spacious green parks, THE PLATEAU has a beautiful scenic view of verdant greenery that completes a picturesque scene to enjoy from your garden and the rooftop terraces.



# MASTERPLAN

A 268-acre integrated mixed-use development offering the opportunity to experience five journeys in a single destination.



- 01 Mindhaus Campus
- 02 D5M
- 03 Lifestyle Area
- 04 Mindhaus Strip I
- 05 Mindhaus Strip II
- 06 Dstreet
- 07 Clubside

- 08 Clubfive
- 09 Twinville
- 10 Townhomes
- 11 Single Family Homes
- 12 Multi-family Homes
- 13 The Plateau
- 14 Greenville



**A- Community Park:**  
Playground & BBQ Area



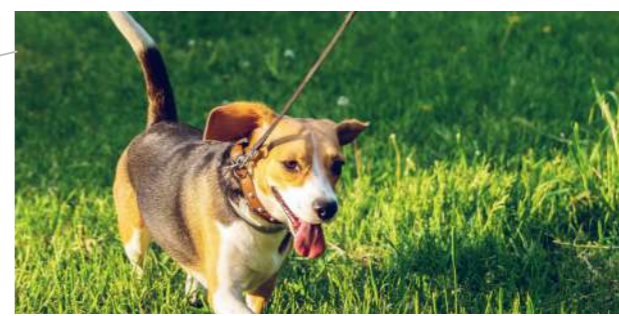
**B- Yoga/Meditation Platform**



**C- Fitness Lawn**



**D- Court Park**



**E- Dog Park**

- A** Community Park
- B** Yoga/Meditation Platform
- C** Fitness Lawn
- D** Court Park
- E** Dog Park



- 20
- 24
- 27
- 29
- 31
- 32
- 33
- 37
- 40
- 42
- 44
- 46
- 51
- 52
- 57
- 63
- 64
- 90
- 126

# A MASTERPLAN GRANTING SPACE & VIEWS

THE PLATEAU is directly overlooking green parks, with the utmost space & privacy between its neighboring buildings.

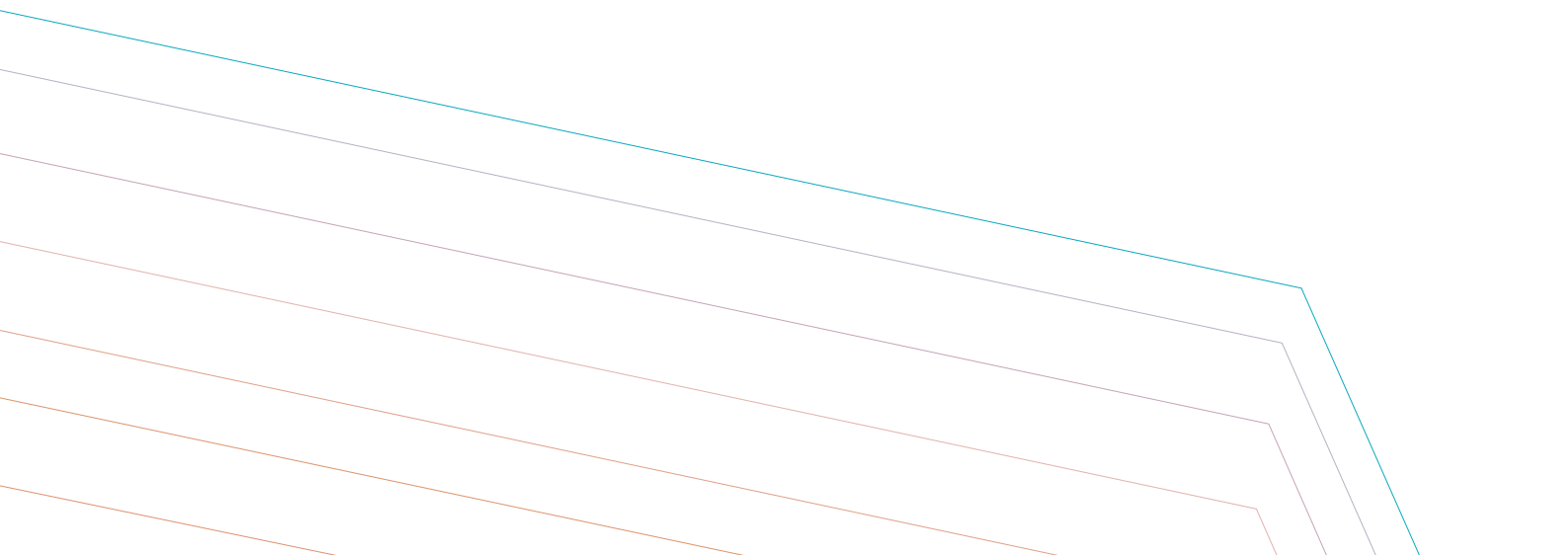
Granting unobscured views from every window, with spacious rooftop terraces and gardens offering prime green views.

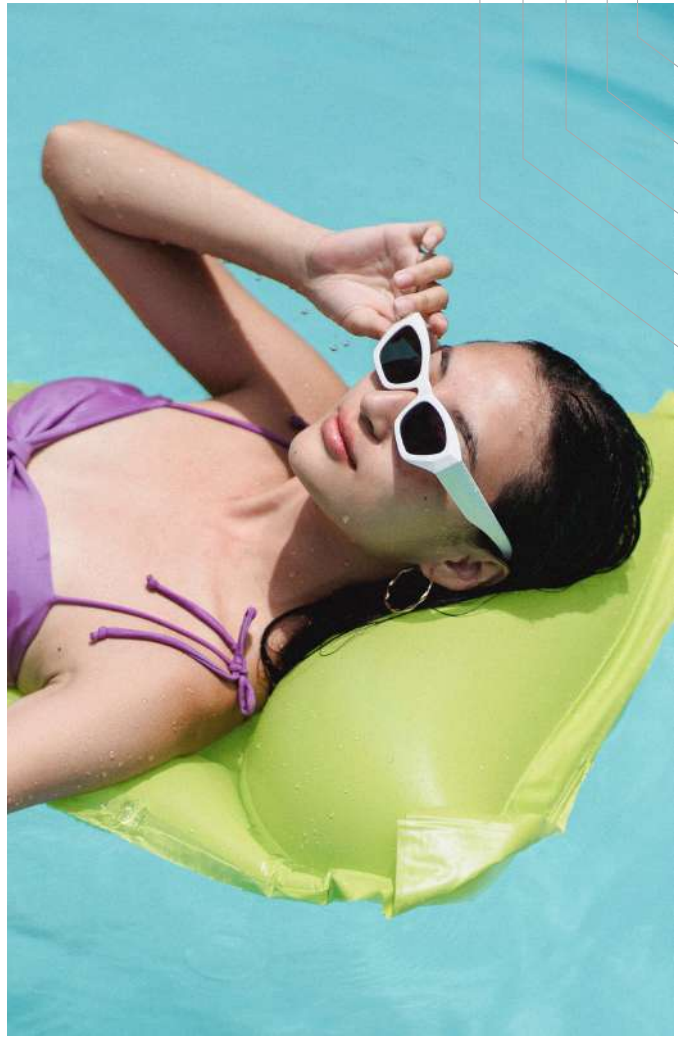




# clubfive

Clubfive is designed to be the living heart of District 5's residential community. Offering the ideal place for entertainment, sports, socialization, & relaxation; It's indoor facilities include a restaurant, TV lounge, multi purpose hall, indoor gym, lounge area, squash courts and a terrace opening up to the outdoors area, which includes swimming pools, tennis courts, five-a-side football fields, paddle tennis courts, jogging track, multi purpose court and kids play areas.









# THE PLATEAU

APARTMENTS | DUPLEXES | LOFTS

TYPE M2  
FLOOR PLANS

# P\_3.0\_E

**GROSS AREA:**  
160 SQM

**UNIT DETAILS:**

- Living Room
- Dining Room
- Kitchen
- Guest Toilet
- Ensuite Master Bedroom
- Bedroom 2
- Bedroom 3
- Shared Bath
- Terrace

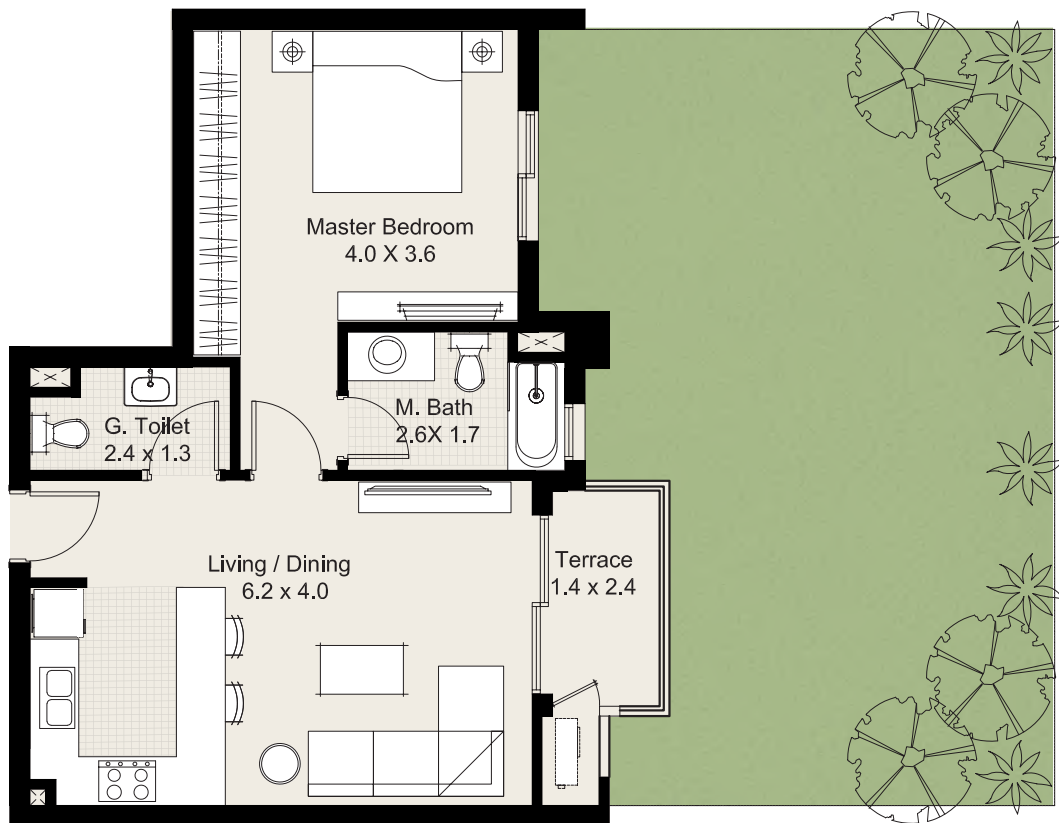


# P\_1.0\_F'

**GROSS AREA:**  
74 SQM

**UNIT DETAILS:**

- Living/Dining Room
- Open kitchen
- Guest Toilet
- Ensuite Master Bedroom
- Terrace



# P\_2.0\_D'

**GROSS AREA:**  
124 SQM

**UNIT DETAILS:**

- Living Room
- Dining Room
- Kitchen
- Guest Toilet
- Ensuite Master Bedroom
- Ensuite Bedroom 2
- Terrace



# P\_2.0\_C'

**GROSS AREA:**  
124 SQM

**UNIT DETAILS:**

- Living Room
- Dining Room
- Kitchen
- Guest Toilet
- Ensuite Master Bedroom
- Ensuite Bedroom 2
- Terrace



# P\_3.0\_E'

**GROSS AREA:**  
160 SQM

**UNIT DETAILS:**

- Living Room
- Dining Room
- Kitchen
- Guest Toilet
- Ensuite Master Bedroom
- Bedroom 2
- Bedroom3
- Shared Bath
- Terrace

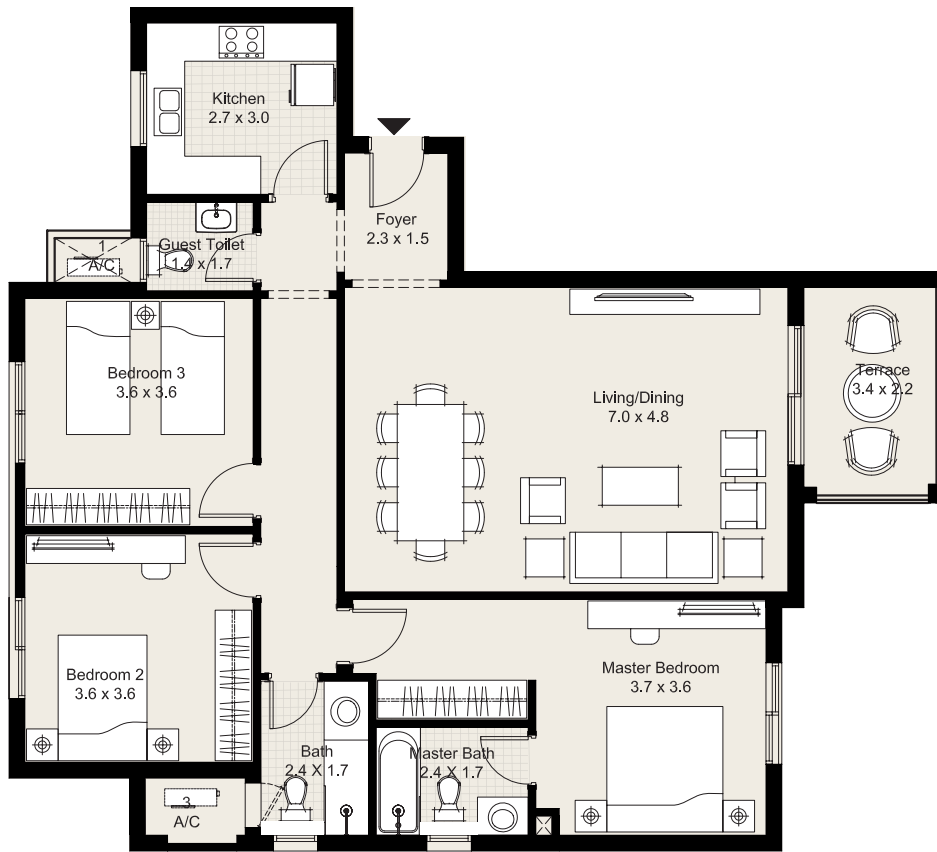


# P\_3.0\_E

**GROSS AREA:**  
160 SQM

**UNIT DETAILS:**

- Living Room
- Dining Room
- Kitchen
- Guest Toilet
- Ensuite Master Bedroom
- Bedroom 2
- Bedroom 3
- Shared Bath
- Terrace

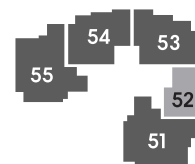
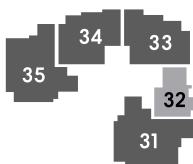
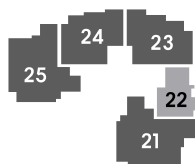
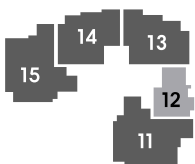
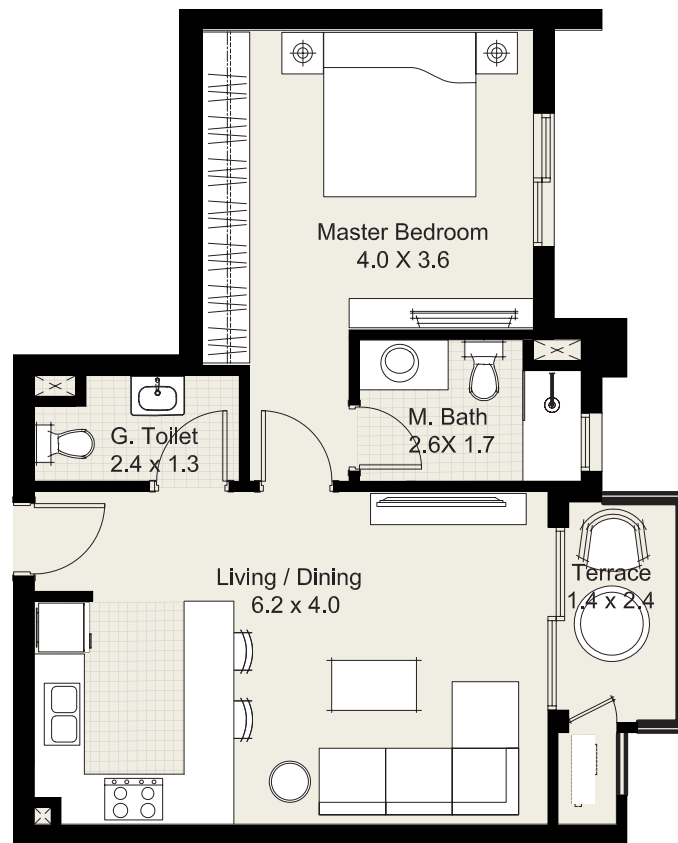


# P\_1.0\_F'

**GROSS AREA:**  
74 SQM

**UNIT DETAILS:**

- Living /Dining Room
- Open kitchen
- Guest Toilet
- Ensuite Master Bedroom
- Terrace



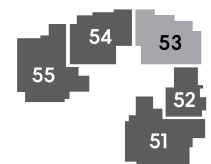
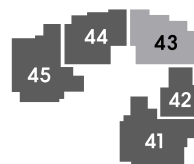
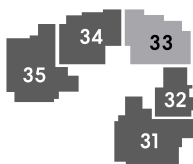
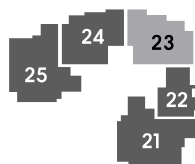
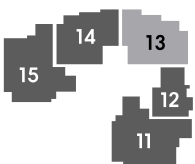
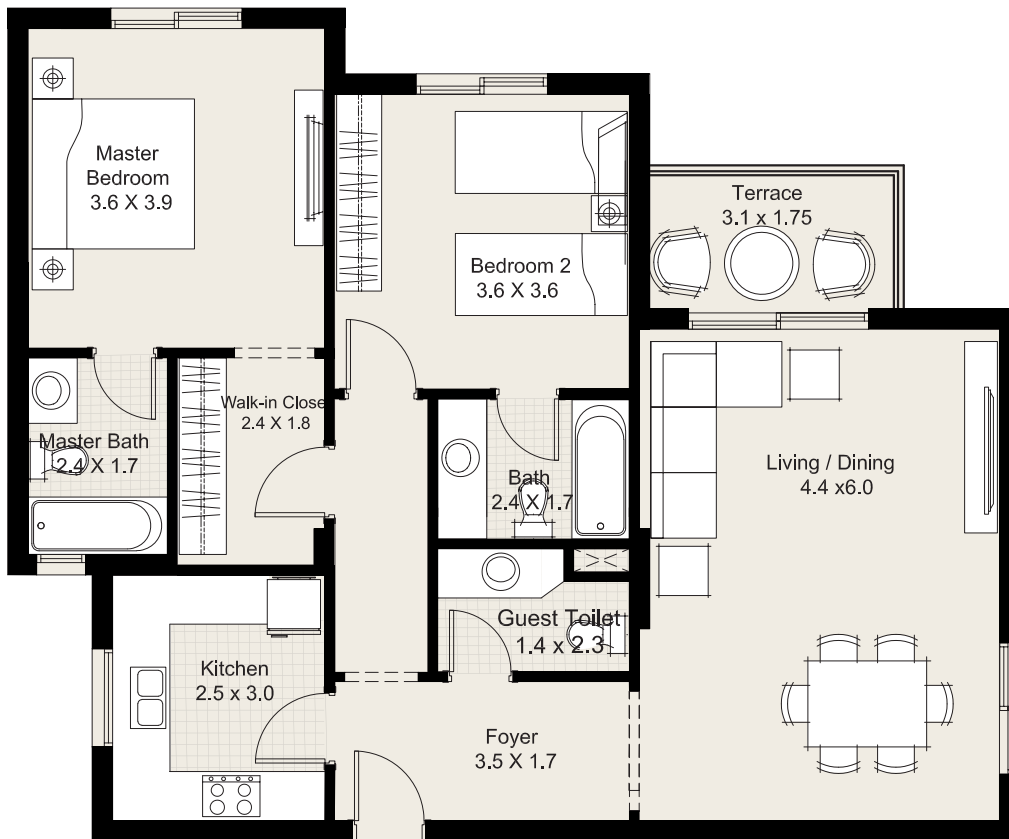


# P\_2.0\_F'

**GROSS AREA:**  
126 SQM

**UNIT DETAILS:**

- Living Room
- Dining Room
- Kitchen
- Guest Toilet
- Ensuite Master Bedroom
- Ensuite Bedroom 2
- Terrace

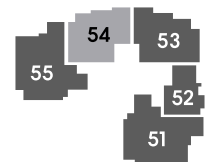
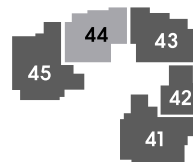
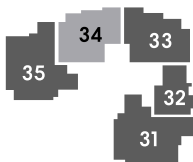
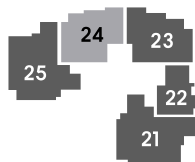


# P\_2.0\_E'

**GROSS AREA:**  
125 SQM

**UNIT DETAILS:**

- Living Room
- Dining Room
- Kitchen
- Guest Toilet
- Ensuite Master Bedroom
- Ensuite Bedroom 2
- Terrace

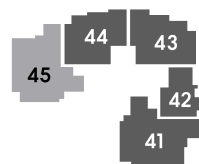
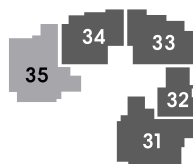
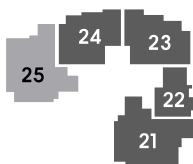
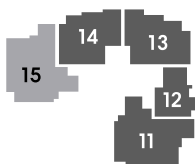


# P\_3.0\_E'

**GROSS AREA:**  
160 SQM

**UNIT DETAILS:**

- Living Room
- Dining Room
- Kitchen
- Guest Toilet
- Ensuite Master Bedroom
- Bedroom 2
- Bedroom 3
- Shared Bath
- Terrace



# P\_2.5\_A

**GROSS AREA:**  
131 SQM +17 SQM ROOF TERRACE

**UNIT DETAILS:**

- Living Room
- Dining Room
- Kitchen
- Guest Toilet
- Ensuite Master Bedroom
- Ensuite Bedroom 2
- Roof Terrace

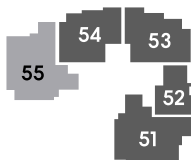


# P\_2.5\_A'

**GROSS AREA:**  
131 SQM + 17 SQM ROOF TERRACE

**UNIT DETAILS:**

- Living Room
- Dining Room
- Kitchen
- Guest Toilet
- Ensuite Master Bedroom
- Ensuite Bedroom 2
- Roof Terrace



# P\_3.5\_D'

## GROSS AREA:

159 SQM + 17 SQM ROOF TERRACE

## UNIT DETAILS:

- Living Room
- Dining Room
- Kitchen
- Guest Toilet
- Ensuite Master Bedroom
- Bedroom 2
- Bedroom 3
- Shared Bath
- Roof Terrace



# P\_2.5\_B'

## GROSS AREA:

125 SQM + 17 SQM ROOF TERRACE

## UNIT DETAILS:

- Living Room
- Dining Room
- Kitchen
- Guest Toilet
- Ensuite Master Bedroom
- Ensuite Bedroom 2
- Roof Terrace



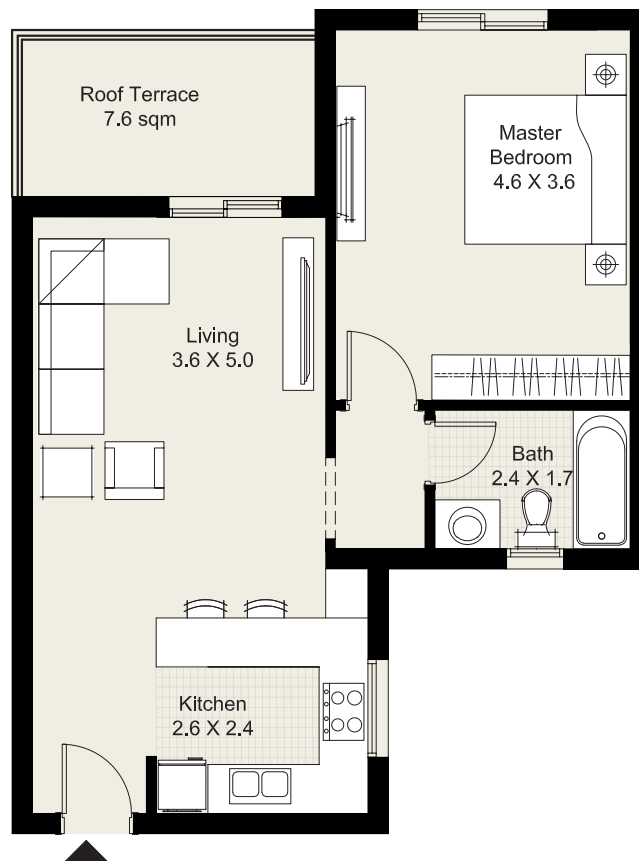
# P\_1.5\_A'

## GROSS AREA:

69 SQM + 8 SQM ROOF TERRACE

## UNIT DETAILS:

- Living /Dining Room
- Open Kitchen
- Master Bedroom
- Bathroom
- Roof Terrace





# P\_3.5\_C'

## GROSS AREA:

158 SQM + 15 SQM ROOF TERRACE

## UNIT DETAILS:

- Living Room
- Dining Room
- Kitchen
- Guest Toilet
- Ensuite Master Bedroom
- Bedroom 2
- Bedroom 3
- Shared Bath
- Roof Terrace





# THE PLATEAU

APARTMENTS | DUPLEXES | LOFTS

TYPE M3  
FLOOR PLANS

# P\_3.0\_E

**GROSS AREA:**  
160 SQM

**UNIT DETAILS:**

- Living Room
- Dining Room
- Kitchen
- Guest Toilet
- Ensuite Master Bedroom
- Bedroom 2
- Bedroom3
- Shared Bath
- Terrace



# P\_2.0\_C

**GROSS AREA:**  
124 SQM

**UNIT DETAILS:**

- Living Room
- Dining Room
- Kitchen
- Ensuite Master Bedroom
- Ensuite Bedroom 2
- Terrace



# P\_2.0\_D

**GROSS AREA:**  
124 SQM

**UNIT DETAILS:**

- Living Room
- Dining Room
- Kitchen
- Guest Toilet
- Ensuite Master Bedroom
- Ensuite Bedroom 2
- Terrace

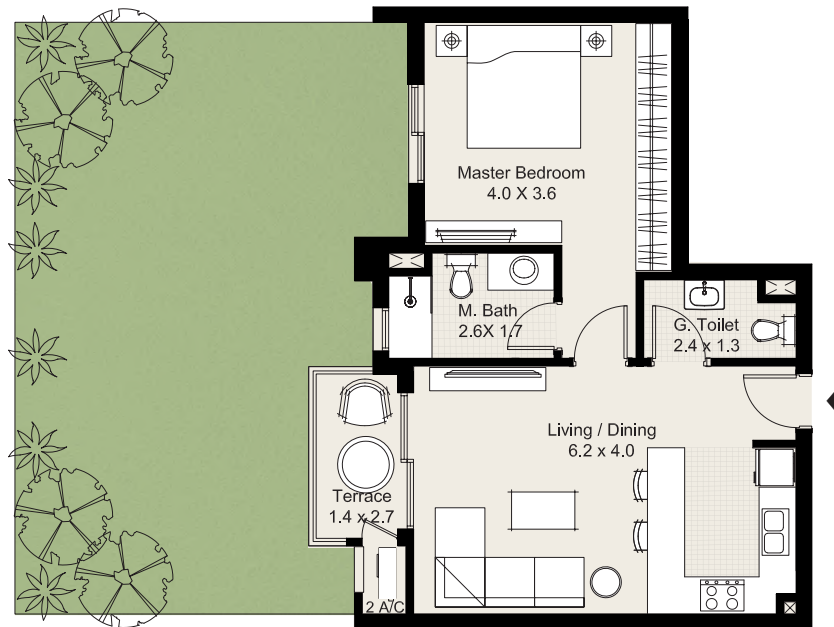


# P\_1.0\_F

**GROSS AREA:**  
74 SQM

**UNIT DETAILS:**

- Living/Dining Room
- Open Kitchen
- Guest Toilet
- Ensuite Master Bedroom
- Terrace

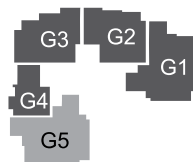


# P\_3.0\_E'

**GROSS AREA:**  
160 SQM

## UNIT DETAILS:

- Living Room
- Dining Room
- Kitchen
- Guest Toilet
- Ensuite Master Bedroom
- Bedroom 2
- Bedroom 3
- Shared Bath
- Terrace

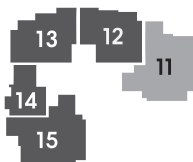


# P\_3.0\_E

**GROSS AREA:**  
160 SQM

**UNIT DETAILS:**

- Living Room
- Dining Room
- Kitchen
- Guest Toilet
- Ensuite Master Bedroom
- Bedroom 2
- Bedroom 3
- Shared Bath
- Terrace



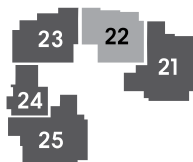
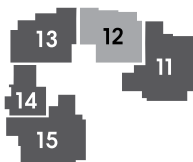
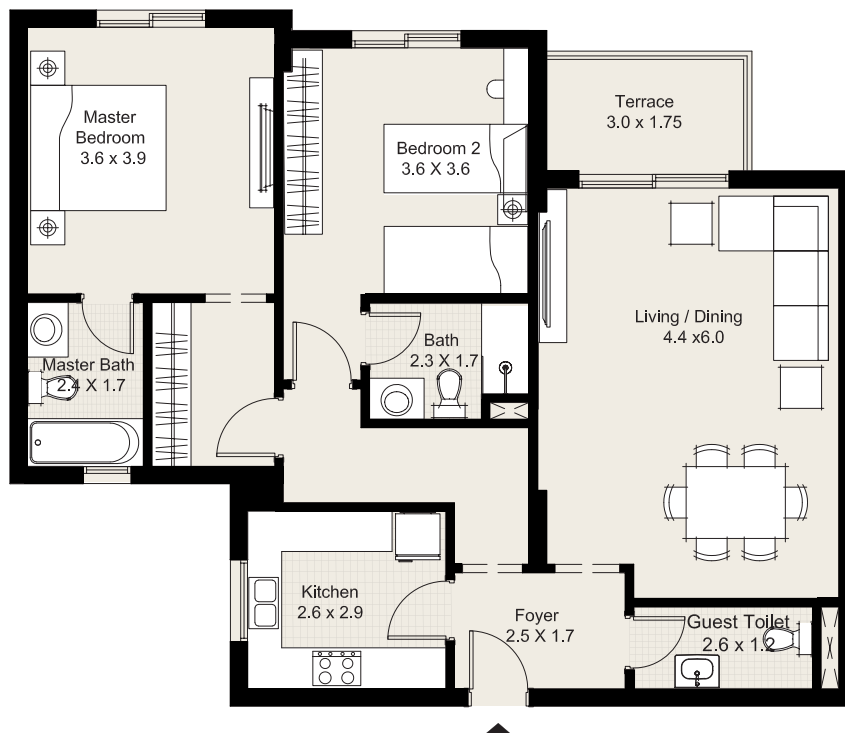


# P\_2.0\_E

**GROSS AREA:**  
125 SQM

**UNIT DETAILS:**

- Living Room
- Dining Room
- Kitchen
- Guest Toilet
- Ensuite Master Bedroom
- Ensuite Bedroom 2
- Terrace

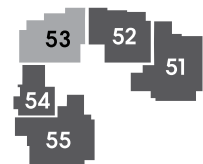
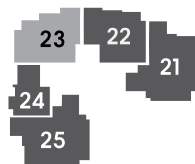
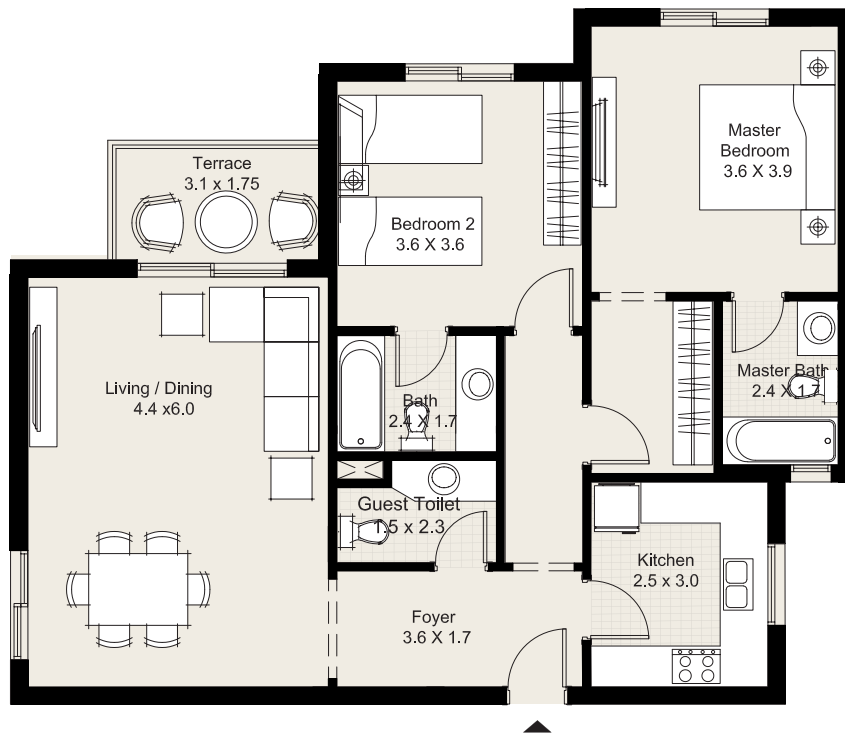


# P\_2.0\_F

**GROSS AREA:**  
126 SQM

**UNIT DETAILS:**

- Living Room
- Dining Room
- Kitchen
- Guest Toilet
- Ensuite Master Bedroom
- Ensuite Bedroom
- Terrace

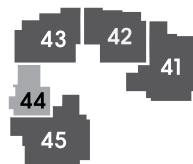
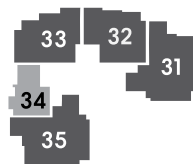
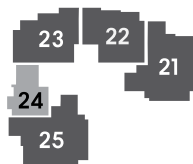
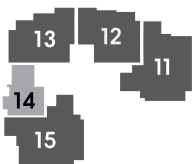
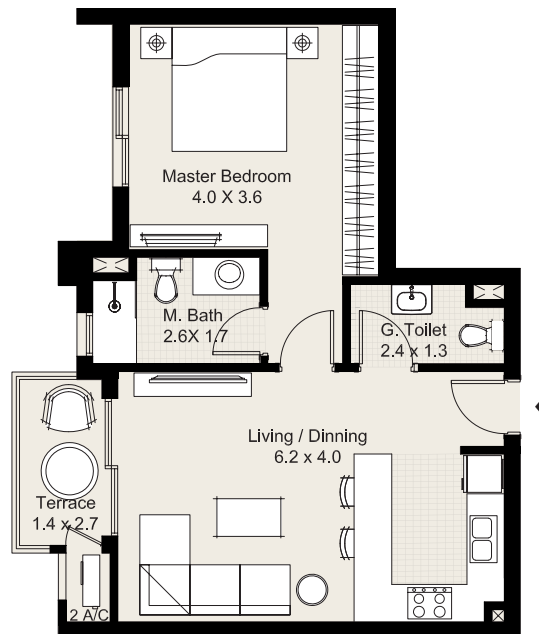


# P\_1.0\_F

**GROSS AREA:**  
74 SQM

**UNIT DETAILS:**

- Living/Dining Room
- Open Kitchen
- Guest Toilet
- Ensuite Master Bedroom
- Terrace

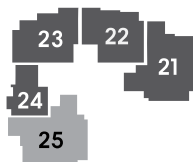
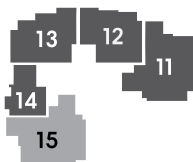


# P\_3.0\_E'

**GROSS AREA:**  
160 SQM

## UNIT DETAILS:

- Living Room
- Dining Room
- Kitchen
- Guest Toilet
- Ensuite Master Bedroom
- Bedroom 2
- Bedroom 3
- Shared Bath
- Terrace



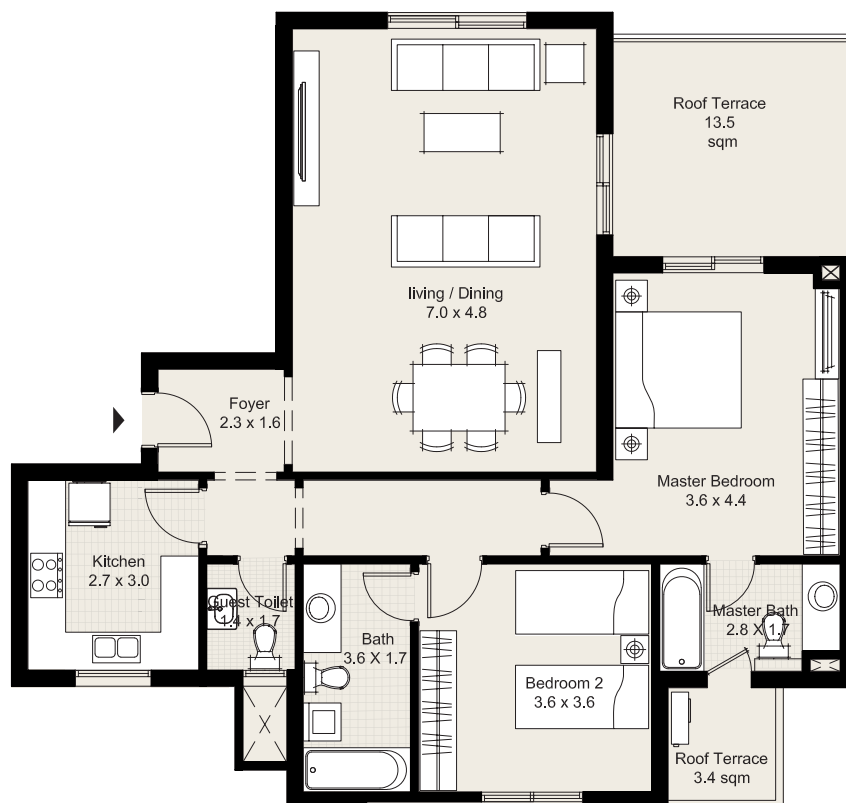
# P\_2.5\_A

## GROSS AREA:

131 SQM + 17 SQM ROOF TERRACE

## UNIT DETAILS:

- Living Room
- Dining Room
- Kitchen
- Guest Toilet
- Ensuite Master Bedroom
- Ensuite Bedroom 2
- Roof Terrace



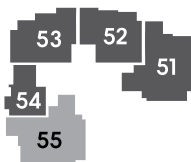
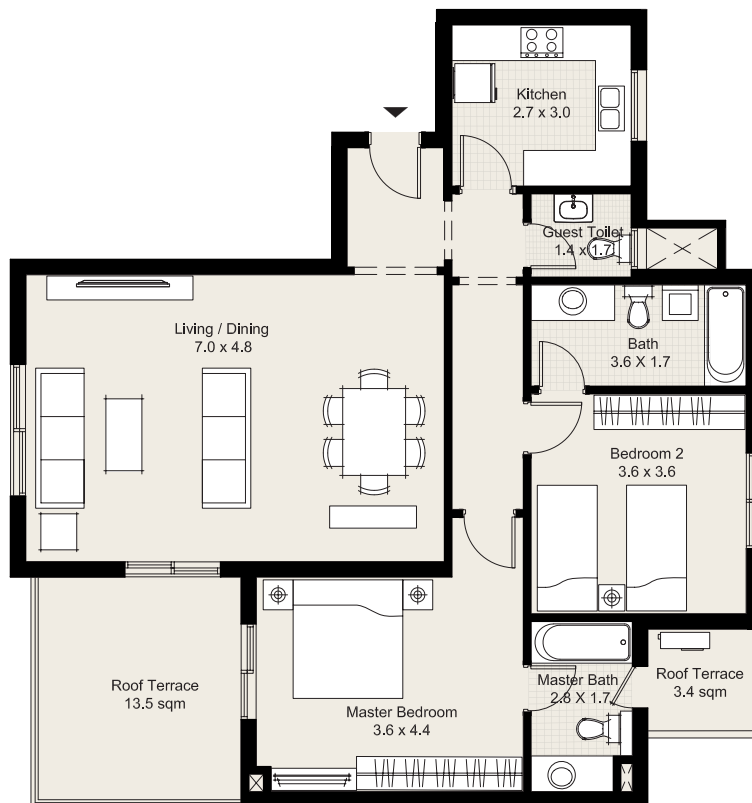
# P\_2.5\_A'

## GROSS AREA:

131 SQM + 17 SQM ROOF TERRACE

## UNIT DETAILS:

- Living Room
- Dining Room
- Kitchen
- Guest Toilet
- Ensuite Master Bedroom
- Ensuite Bedroom 2
- Roof Terrace



# P\_3.5\_C

## GROSS AREA:

158 SQM + 15 SQM ROOF TERRACE

## UNIT DETAILS:

- Living Room
- Dining Room
- Kitchen
- Guest Toilet
- Ensuite Master Bedroom
- Bedroom 2
- Bedroom 3
- Shared Bath
- Roof Terrace



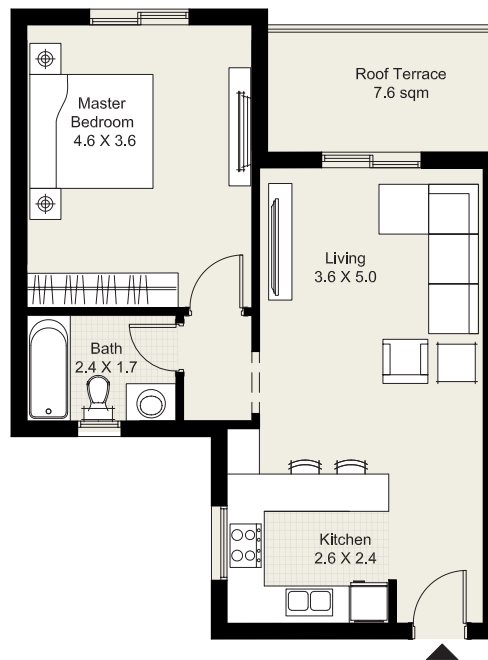
# P\_1.5\_A

## GROSS AREA:

69 SQM + 8 SQM ROOF TERRACE

## UNIT DETAILS:

- Living/Dining Room
- Open Kitchen
- Master Bedroom
- Bathroom
- Roof Terrace





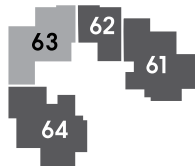
# P\_2.5\_B

## GROSS AREA:

125 SQM + 17 SQM ROOF TERRACE

## UNIT DETAILS:

- Living Room
- Dining Room
- Kitchen
- Guest Toilet
- Ensuite Master Bedroom
- Ensuite Bedroom 2
- Roof Terrace



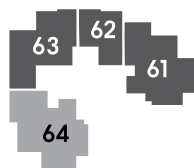
# P\_3.5\_D

## GROSS AREA:

159 SQM + 17 SQM ROOF TERRACE

## UNIT DETAILS:

- Living Room
- Dining Room
- Kitchen
- Guest Toilet
- Ensuite Master Bedroom
- Bedroom 2
- Bedroom 3
- Shared Bath
- Roof Terrace



# DISTRICT 5

## THE PLATEAU

APARTMENTS | DUPLEXES | LOFTS

### Contact

For more information, please contact:

Hotline - 19876

Email - [info@marakez.net](mailto:info@marakez.net)

Website - [www.marakez.net](http://www.marakez.net)

Facebook - Marakez Egypt

Instagram - @marakezegypt

### Marakez Sales Centres

**Zamalek** : 6 El Sheikh El Mersafy St.

**6<sup>th</sup> of October** : The Park: Mall of Arabia, Gate 15.

**New Katameya** : KM 6, Katameya-Ein Sokhna Road, New Katameya, Cairo.





MARAKEZ